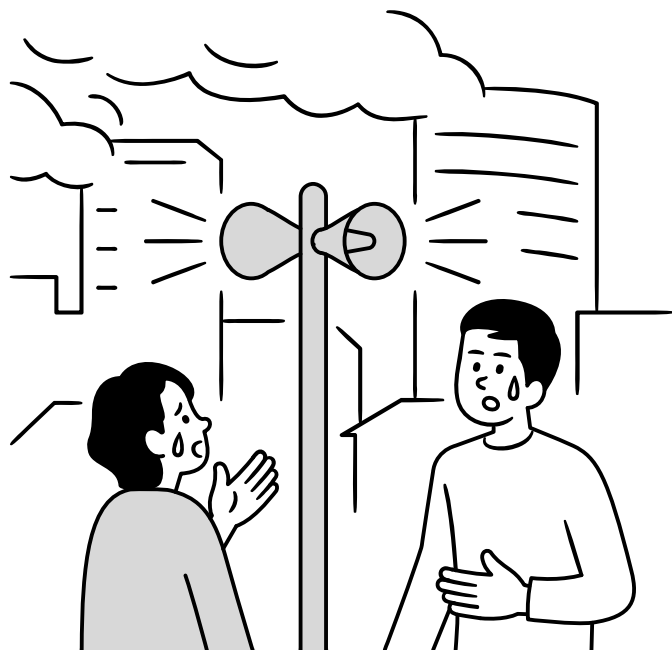
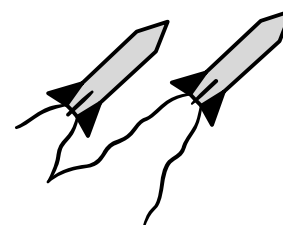


Terrorist and Armed Attacks



Danger of terrorist and armed attacks

As Tokyo is the center of government and economy, it could become the target of terrorist and armed attacks. The Act Concerning the Measures for Protection of the People in Armed Attack Situations, etc. ("Civil Protection Act," Act No. 112 of 2004) was enacted with the aim of protecting the lives and assets of the citizens of Japan. Based on this act, in the event of an attack, the public will be warned through the municipalities' wireless emergency alert systems. Make a note to listen to information broadcast over social media, television, radio, and other media, and follow the instructions.



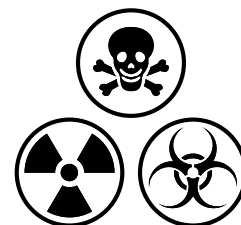
Missile attack

It would be extremely difficult to identify the target of the attack, and it is estimated that the time to impact will be short.



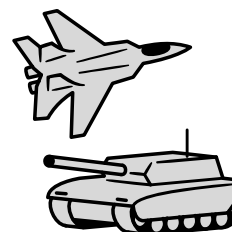
Attack by insurgents or special forces

Such an attack can result in sudden, unpredictable damages. If the target of an attack is a nuclear facility, the damages could be huge.



Attacks using chemical agents, etc.

Attacks using chemical or biological agents, or nuclear materials will have health effects, requiring special response.



Landing invasion and air attacks

In an invasion, landing operations are likely to target the coastal areas, and it can be assumed that air attacks will target major facilities in urban areas.

Protect yourself from a terrorist or armed attack

When there is a risk of terrorism or armed attack, try to obtain information by paying attention to the television, radio, and internet news.



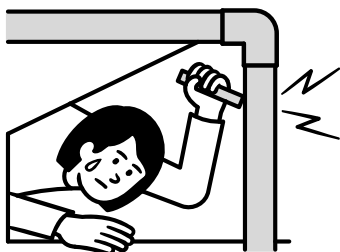
If an explosion occurs

If an explosion occurs, quickly get low and hide under something like a sturdy table. Explosions could continue, so evacuate to a safe place.



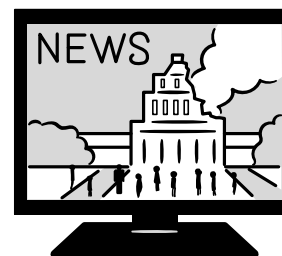
If a fire breaks out

If a fire breaks out due to a terrorist or armed attack, cover your mouth and nose with a handkerchief, etc., to keep from inhaling smoke, and quickly evacuate while keeping yourself as low as possible.



If you're trapped

Tap on pipes or other things nearby to let others know where you are. Calling out loudly for help should be the last resort since this could cause dust to be breathed in.



Evacuation from an attack by insurgents

The damage from an attack by insurgents will generally be limited to a relatively small area, but the damage may spread. First evacuate indoors and then follow the instructions of the authorities.

Evacuation from chemical or biological attacks

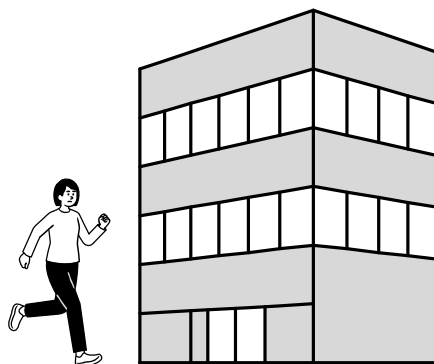
Cover your mouth and nose with a handkerchief, and leave the area immediately. Evacuate to a safe place that is unlikely to become contaminated such as a closed-off place indoors or high ground upwind.

Evacuation from a nuclear explosion or radioactive contamination

Hide behind cover and evacuate to an underground facility or strong building. An explosive called a “dirty bomb” will cause radioactive contamination of the area. Follow the instructions of the authorities and consult a physician.

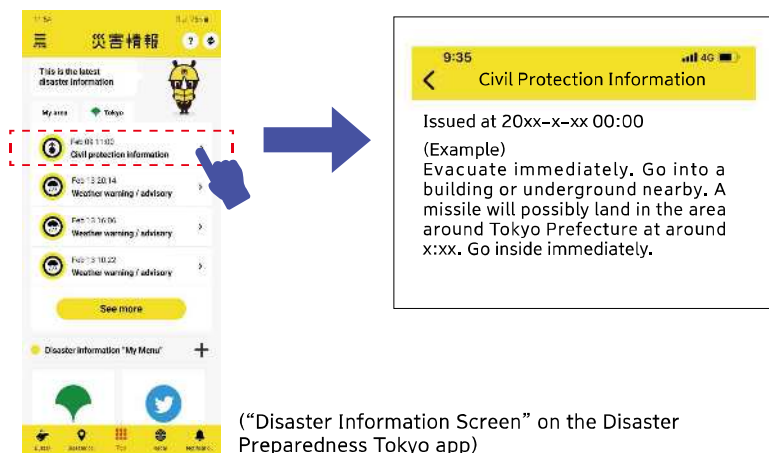
Evacuation from a missile attack

Militarily powerful countries are concentrated around Japan, and there is a noticeable trend toward further strengthening of military power and increased military activity. In particular, North Korea has launched ballistic missiles in quick succession since September 2021 and has been repeating missile launches at an unprecedented rate since the beginning of 2022. These military moves by North Korea pose a grave and immediate threat to Japan's security.



Issuance of warnings via J-Alert

If there is a possibility that a ballistic missile may fall on Japan, the National Early Warning System (J-Alert) which can instantly transmit information, will be activated. In addition to a special siren sound and message being played over the wireless emergency alert system, emergency information will also be sent via emergency alert email to mobile phones. A notification will also be received from the Disaster Preparedness Tokyo app as soon as a J-Alert is issued.



If you hear a J-Alert



Run away

When you're outdoors

Evacuate inside a nearby building or a basement (a sturdy building is best).



Move away

When you're indoors

Move away from windows or to a room with no windows to avoid being injured by broken glass from a blast.



Protect yourself

When there are no buildings

Hide behind something or get low and protect your head.

*The Tokyo Metropolitan Government is progressing the designation of sturdy buildings and underground facilities as “emergency temporary evacuation facilities,” which are temporary evacuation facilities intended to reduce the direct damage from the blast waves caused by a missile attack.

It is important to evacuate to the nearest building or basement as soon as possible. When doing so, evacuate to a sturdy building or underground facility if there is one nearby.



Civil Protection Portal Site Evacuation facilities

If a ballistic missile falls

Missiles may contain toxic substances. As a precaution, if you are outdoors, cover your mouth and nose with a handkerchief, move away from the area immediately, and evacuate to a well-sealed indoor location or upwind. If you are indoors, turn off ventilation fans, close the windows, and seal the room.